



CURRENT TRENDS IN TENT CONSTRUCTION

DESIGNS & EXAMPLES

SPHERES OF USE

2015

TENT CONSTRUCTION SPHERES OF USE



WAREHOUSES

WAREHOUSES, MOBILE CONSTRUCTIONS OF THE LOGISTIC CENTERS



TEMPORARY & PERMANENT



TENT CONSTRUCTION SPHERES OF USE



AGROSECTOR

GRANARIES



ANIMAL HUSBANDRY



TENT CONSTRUCTION SPHERES OF USE



SPORT

tennis



equestrian sport



volleyball



universal playgrounds



Ice hockey



athletic halls



TENT CONSTRUCTION SPHERES OF USE

Exclusive adaptability in highly specialized spheres:

AVIATION



Shelters of a special purpose:
military equipment,
ammunition, chemistry, etc.



ARCHITECTURAL OPPORTUNITIES OF TENT CONSTRUCTIONS



GEOMETRY OF TENT CONSTRUCTIONS ALLOW TO SOLVE THE HUGE NUMBER OF SPATIAL TASKS IN A COMPLEX. UNLIMITED OPPORTUNITIES OF MODELLING OF KITS, DESIGN AND ARCHITECTURE

DIRECT SLOPES FORMS



ARCHITECTURAL OPPORTUNITIES OF TENT CONSTRUCTIONS



ARCH FORMS



ARCHITECTURAL OPPORTUNITIES OF TENT CONSTRUCTIONS



THE ROUNDED FORMS



ARCHITECTURAL OPPORTUNITIES OF TENT CONSTRUCTIONS



INDIVIDUAL FORMS



COLOUR SCHEMES OF TENT CONSTRUCTIONS



Wide color palette of an external tent. The universal decision - a white monophonic tent.

Effect of a transmission of light - 70% only in a white tent! That allows not to use internal lighting during the day.



**COLOUR SCHEMES OF TENT
CONSTRUCTIONS**



Beige monophonic tent

**Effect of a transmission of light
- 32%**



COLOUR SCHEMES OF TENT CONSTRUCTIONS



Configuration from several monophonic colours



**COMPLETE SETS
TENT CONSTRUCTIONS**

**Entrance group:
aluminum doors**



**Gates group: A retractable gates from
frame/PVC
max to 5m, min from 3m**



**Gates group: The oar gates from
frame/PVC max to 6,5m, min from 1m**



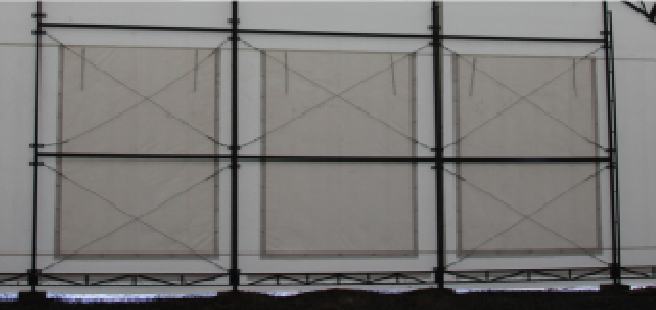
**COMPLETE SETS
TENT CONSTRUCTIONS**



Ventilating valves from transparent fabric, an inside layer from the PVC mesh



Ventilating valves from fabric, an inside layer from the PVC mesh



**COMPLETE SETS
TENT CONSTRUCTIONS**

**Tent construction can be established on any firm surface
fastening to the mortgage/tape
base**



**welding of heels to mortgages /
dot base**



**fastening to concrete plates /
without the base**



**fastening to asphalt /
without the base**



WE HAVE NO SAMPLE TENTS. WE HAVE ALL INDIVIDUAL PROJECTS.

AT THE DESIGN STAGE WE PROVIDE ALL CONVENIENT TRIFLES FOR COMFORT OF OPERATION.

ALL CHOSEN COMPLETE SET IS INCLUDED IN COST.



Speed of construction.
You receive object ready
for operation in the
shortest possible time.

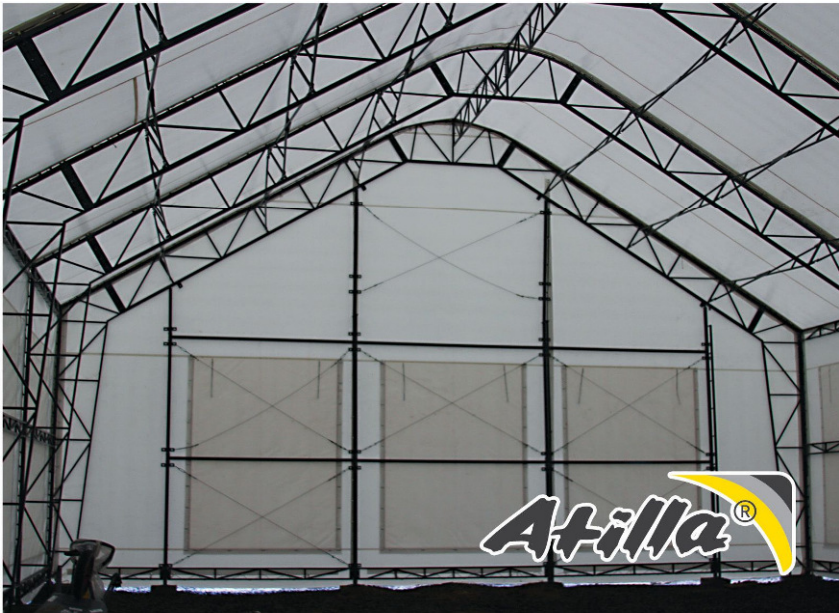


Economy.
Much cheaper
than other
types of
construction.

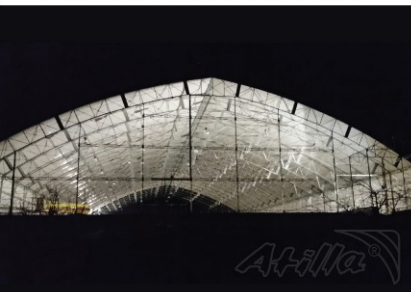
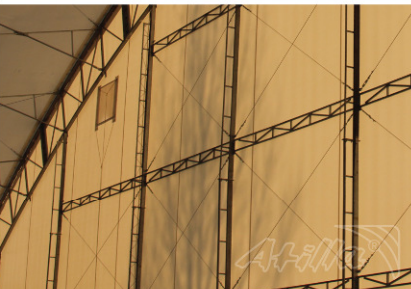


Permissions to installation.
Minimum of allowing
documents.

EXAMPLES OF SOME OUR TENT CONSTRUCTION
WAREHOUSE /TORCHIN PRODUCT/



EXAMPLES OF SOME OUR TENT CONSTRUCTION - HORSE ARENA



EXAMPLES OF SOME OUR TENT CONSTRUCTION
PRODUCTION LINE FOR BIOGAS - MHP



EXAMPLES OF SOME OUR TENT CONSTRUCTION
WAREHOUSE /COSTAL/



EXAMPLES OF SOME OUR TENT CONSTRUCTION
WAREHOUSE /PERI-UKRAINE/



EXAMPLES OF SOME OUR TENT CONSTRUCTION MOBILE STAGE
IMPERIAL TOBACCO UKRAINE



**EXAMPLES OF SOME OUR TENT CONSTRUCTION
WAREHOUSE /COCA-COLA PLANT UKRAINE/ 6000sq.m**



DESCRIPTION CONSTRUCTION

Typical materials for frames - steel profile GOST 10704-76 and GOST 8639-76, GOST 19904-74 sheet products, steel corners GOST 8509-80. Treatment of a skeleton in the factory or polymer sheeting or galvanized method (hot or cold galvanizing).

Typical connection frames bolted connection through steel plates, bolts least M10 bolts strength class 5.8 accuracy class "B" GOST GOST 7798 or 7796, meeting the requirements of GOST 1759.0. Nuts GOST 5915 strength class 4.

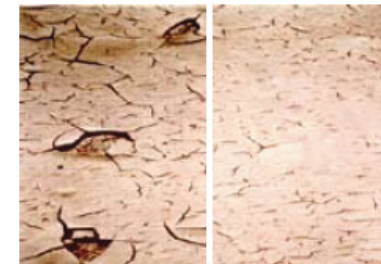
Typical materials for external coating, awnings, hermetically welded to each other devices Hot / HDTV welding, industrial PVC (polyvinyl chloride) reinforced with polyester base, at least +/- 950 g / m²;

Typical materials for lining, awnings, welded to each other devices Hot / HDTV welding of PVC (polyvinyl chloride) reinforced with polyester base, at least +/- 540 g / m²;

Typical materials for insulation (intermediate cover): paintings, collected between an adhesive tape with synthetic fabric (polyester), at least +/- 200 g;



Traitement sur les deux faces pour un état de surface lisse et moins salissant. Une protection résistante aux intempéries.
The smooth Cleangard topcoat lacquer prevents soiling and facilitates cleaning. A solid protection against weathering.



Vernis Classique
Classic lacquer

Vernis Cleangard
Cleangard lacquer



Traitement spécifique à Dickson pour empêcher la moisissure par capillarité. Le tissu dure plus longtemps et garde son aspect d'origine.
Dickson's unique anti-wicking process helps the fabric to last longer and look like new.



Enduction classique
Classic coating

System LOWICK Dickson
Dickson's LOWICK System



Zones de pénétration de l'humidité.
Moisture penetration zones.



Imprégnation totale des fils dans la matière.
Total coating impregnation of the yarn.

OPERATING PARAMETERS TENT CONSTRUCTIONS



OPERATING PARAMETERS

- Operating Temperature range - from -30°S to + 70°S.
- Summer mode operation: ventilation in summer is achieved by raising the walls and / or ventilation windows, and the walls remain protective net. The optional use of mechanical ventilation.
- Winter mode operation: on demand compliance with temperature regime need to install additional equipment for heating. The estimated capacity of coolant needed to heat the CTC during the cold period at t -30°S and achieve internal temperature +12 +15 ° C:
 - For single-layer CTC - 580 W / m²
 - For two-layer CTC - 130 W / m²
 - For a three-layer CTC - 50 W / m²Application layer covering the expense of air space between the layers, can save 60-70% on heating in winter, compared with a single layer coating.
- Lifetime frame - 15 years or more.
- Lifetime awning cover - 7-10 years (with an option to replace it with a new one).

PROVIDE unconditional guarantees on the construction period of 2 years

PROVIDE FOR post-warranty service support PERIOD:
testing of structures,
regular preventive measures, restoration or modification design
repairs in case of damage to the frame or canopy.



THANKS FOR ATTENTION!

www.atilla.ua

15-a, Mira Avenue, Kiev, 02105, Ukraine
Tel/fax:+380 (44) 237 1448
E-mail: sales@atilla.ua